

Headford Mews, Sheffield



£850 Per Calendar Month



2



1

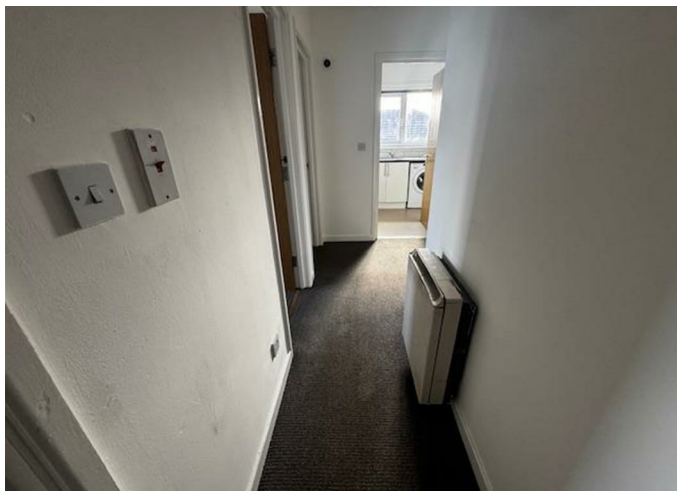


1



62

Welcome to Headford Mews in Sheffield! This charming two-bedroom, one-bathroom flat is now available for rent. Situated on the third floor. Located in a vibrant area of Sheffield, this flat provides easy access to local amenities, shops, and transport links, making it a great choice for those seeking a convenient lifestyle. Contact us now to arrange a viewing and secure this fantastic rental property in Headford Mews!



- Private Entrance Hall
- Bathroom
- 1 Double and 1 Single Bedroom
- Fully Fitted Kitchen
- Good Sized Lounge
- AVAILABLE IMMEDIATELY
- EPC Grade D
- Council Tax Band A

Call **01977 285 111** to view this property or visit www.crownestateagents.com

Opening hours:
Mon - Fri 9am - 5pm
Sat 10am - 2pm

Front Elevation

Situated on Headford Mews in Sheffield.

Entrance Hall

The private entrance hall provides access to the property.

Bathroom

Spacious partially tiled bathroom, with a blush pink three piece suite which comprises of a panelled bath with an electric shower over, wash hand basin and a low flush wc. With a UPVC frosted window and electric heating radiator.

Bedroom 1

Generously sized double bedroom, with double bed, single wardrobe and chest of drawers, a window provides natural light.

Bedroom 2

Bedroom two is of a single size and comes with a single bed and chest of drawers. The window faces out to the rear of the property and there is an electric heating radiators.

Kitchen

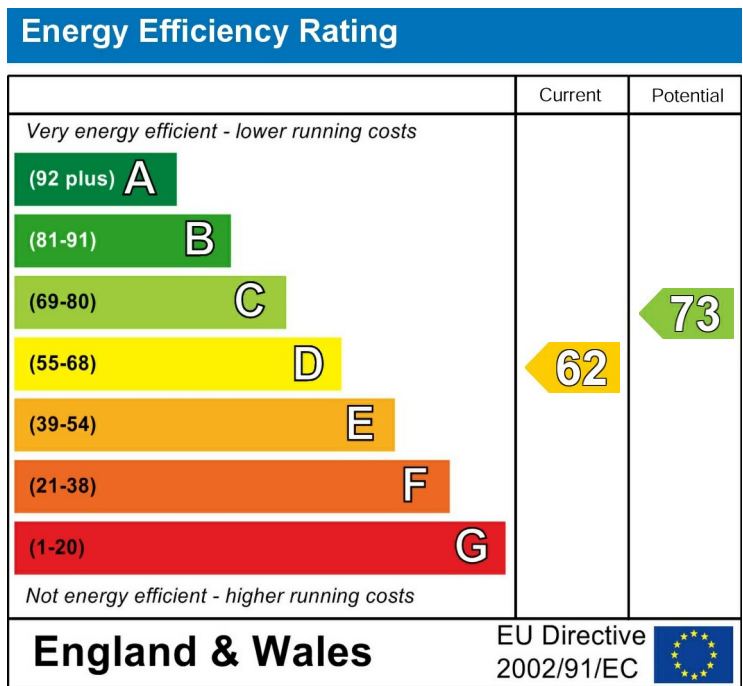
The modern fitted Kitchen has a range of base and wall units with work surfaces over, incorporating a single sink drainer. Washing machine, cooker and fridge are included.

Lounge

Spacious living area, with neutral decor and newly fitted carpets. With electric wall heater and lots of natural light.



FLOOR PLAN



Please call our Castle Dwellings Ltd Office on 01977 285 111 if you wish to arrange a viewing appointment for this property or if you require further information.

These particulars, whilst believed to be accurate are set out as a general outline only for guidance and do not constitute any part of an offer or contract. Intending purchasers should not rely on them as statements of representation of fact, but must satisfy themselves by inspection or otherwise as to their accuracy. No person in this firm's employment has the authority to make or give any representation or warranty in respect of the property.

Call **01977 285 111** to view this property or visit www.crownestateagents.com

Opening hours:
Mon - Fri 9am - 5pm
Sat 10am - 2pm